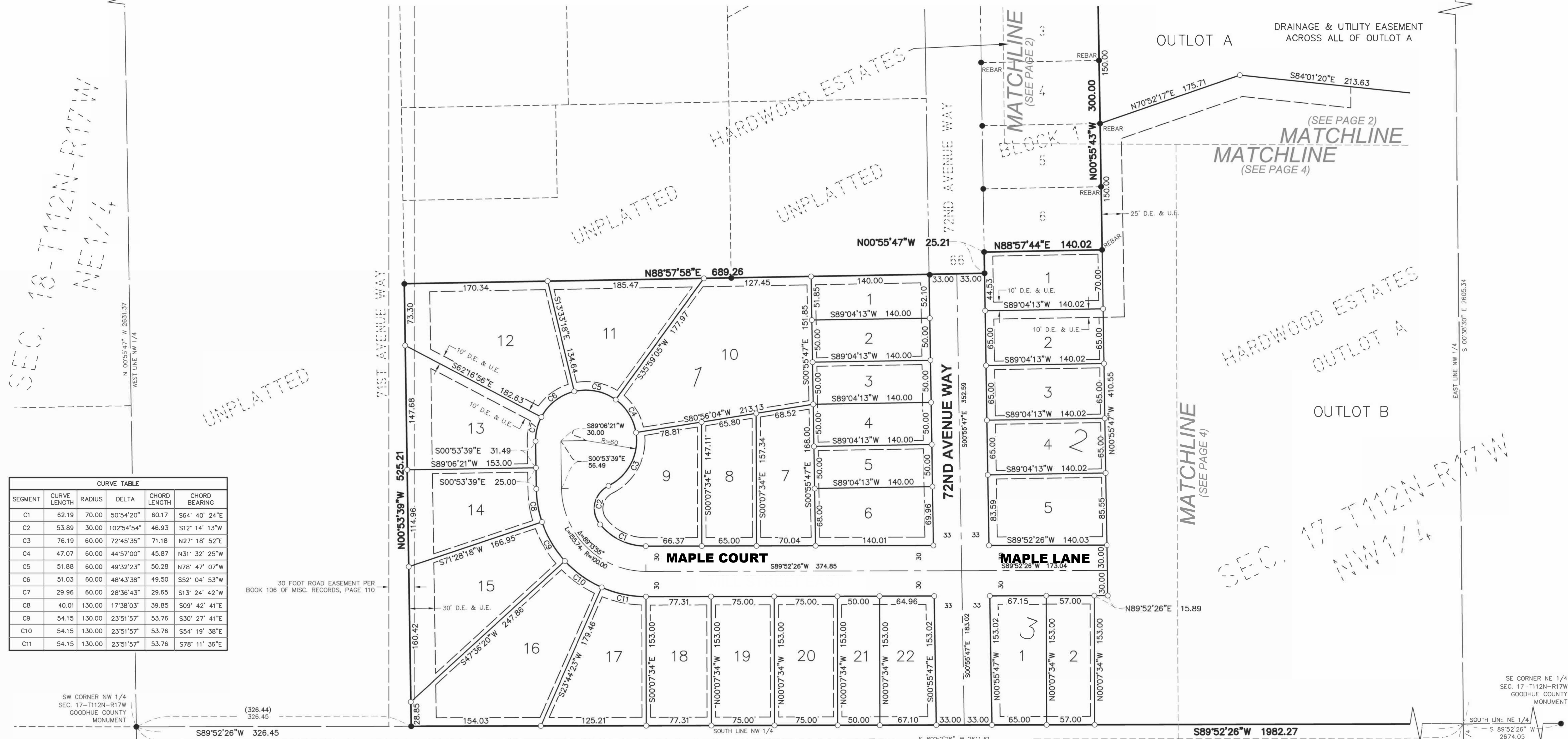


HARDWOOD ESTATES SECOND SUBDIVISION

NW CORNER NW 1/4
SEC. 17-T112N-R17W
GOODHUE COUNTY
MONUMENT

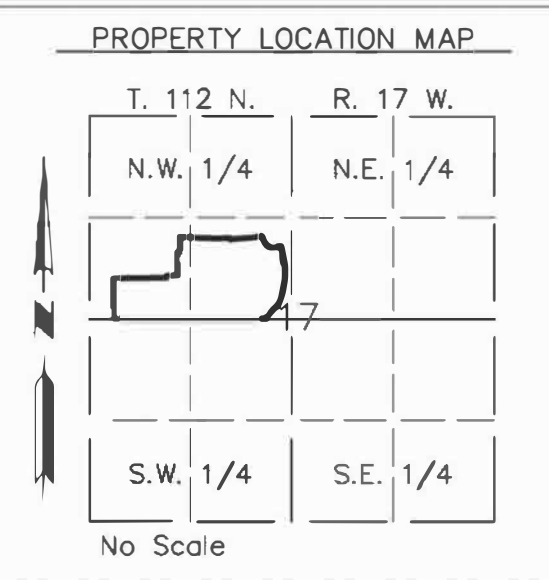
S 89°33'41" E 2625.21
NORTH LINE NW 1/4

NE CORNER NW 1/4
SEC. 17-T112N-R17W
GOODHUE COUNTY
MONUMENT

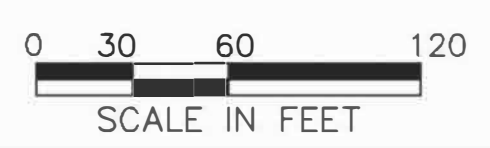


CURVE TABLE					
SEGMENT	CURVE LENGTH	RADIUS	DELTA	CHORD LENGTH	CHORD BEARING
C1	62.19	70.00	50°54'20"	60.17	S64° 40' 24"E
C2	53.89	30.00	102°54'54"	46.93	S12° 14' 13"W
C3	76.19	60.00	72°45'35"	71.18	N27° 18' 52"E
C4	47.07	60.00	44°57'00"	45.87	N31° 32' 25"W
C5	51.88	60.00	49°32'23"	50.28	N78° 47' 07"W
C6	51.03	60.00	48°43'38"	49.50	S52° 04' 53"W
C7	29.96	60.00	28°36'43"	29.65	S13° 24' 42"W
C8	40.01	130.00	17°38'03"	39.85	S09° 42' 41"E
C9	54.15	130.00	23°51'57"	53.76	S30° 27' 41"E
C10	54.15	130.00	23°51'57"	53.76	S54° 19' 38"E
C11	54.15	130.00	23°51'57"	53.76	S78° 11' 36"E

30 FOOT ROAD EASEMENT PER BOOK 106 OF MISC. RECORDS, PAGE 110

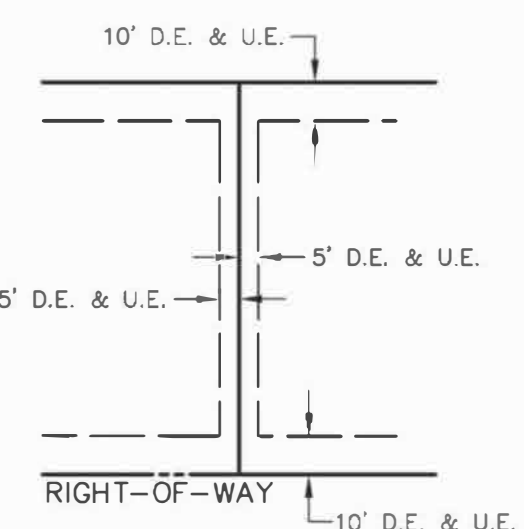


BEARING SYSTEM USED:
ALL BEARINGS ARE IN RELATIONSHIP WITH THE GOODHUE COUNTY COORDINATE SYSTEM (NAD 83, ADJUSTED 1996) WITH THE SOUTH LINE OF THE NW 1/4 HAVING A BEARING OF S89°52'26"W.



LEGEND

- - FOUND 1/2" PIPE UNLESS OTHERWISE NOTED
- - DENOTES 1/2" IRON PIPE WITH CAP #44930 TO BE SET WITHIN ONE YEAR OF THE RECORDING OF THIS PLAT.
- (X) RECORD DIMENSION
- CENTERLINE
- - - RIGHT-OF-WAY
- - - EXISTING BOUNDARY
- - - CONTROLLED ACCESS



BEING 5 FEET IN WIDTH ALONG COMMON LOT LINES, 10 FEET IN WIDTH ALONG RIGHT-OF-WAY AND NON ADJOINING LOT LINES UNLESS OTHERWISE INDICATED.

UTILITY EASEMENT DEFINED

An unobstructed easement for the construction and maintenance of all necessary overhead, underground or surface public utilities, including rights to conduct drainage and trimming on said easement.
U.E. = UTILITY EASEMENT D.E. = DRAINAGE EASEMENT

